



UniFold Specifications

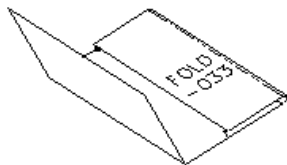
Average Length (approx.)	300" (762 cm) length varies depending on configuration
Width	48" (122 cm)
Height	56" (142 cm)
Net Weight (approx.)	3,500 lbs (1,587 kg)
Shipping Weight (approx.)	4,500 lbs (2,041 kg)
Operating Speed	4,000-25,000 pph, 350 fpm (106.7 mpm)
Maximum Sheet Size	29" x 24" (73 x 61 cm), 29" x 30" (73 x 76 cm) w/optional 30" extension
Minimum Sheet Size	6" x 6" (15 x 15 cm)
Stock Range	.006 - .018 (100 - 400 gsm) coated or uncoated
Electrical	230V, 3 phase + neutral, 50/60hz, 20 amp
Air	90 psi, 5 cfm

Sample Production Formats

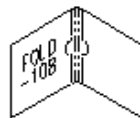
The UniFold is capable of many more production formats. Visit Kluge on the web at www.kluge.biz for more information.



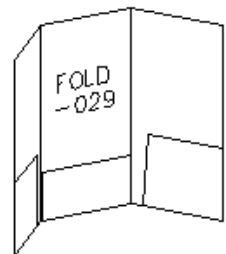
Finished: 5 x 5



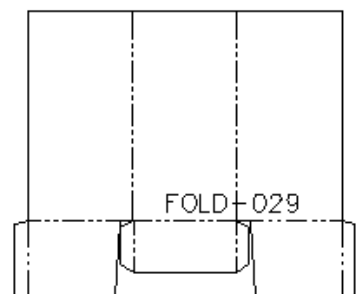
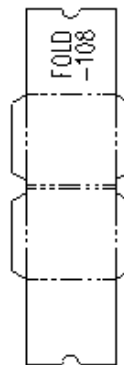
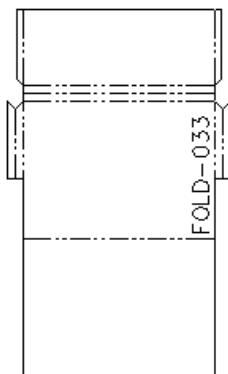
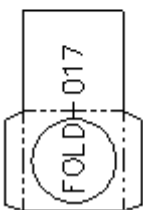
Finished: 12.47 x 9.5



Finished:
10.44 x 5.06

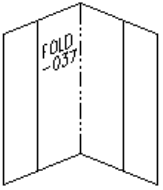


Finished: 12 x 6



Kluge UniFold™ Specifications

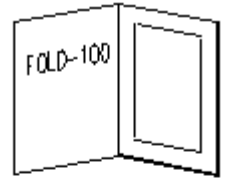
Folding and Gluing System



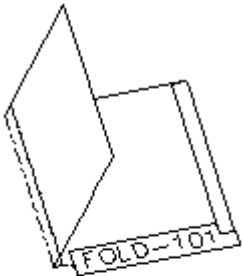
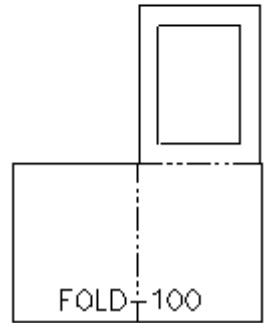
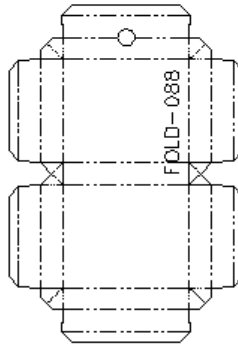
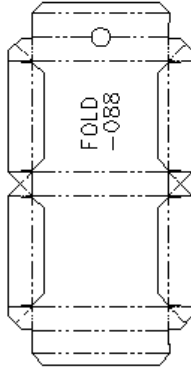
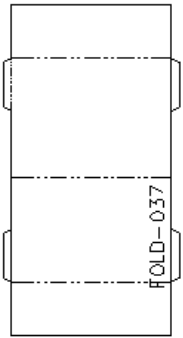
Finished: 12 x 9



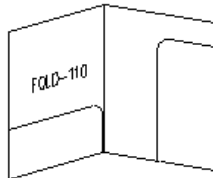
Finished: 24.88 x 12.63



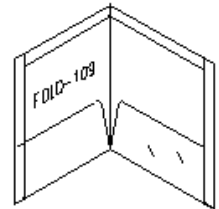
Finished: 6.63 x 8.5



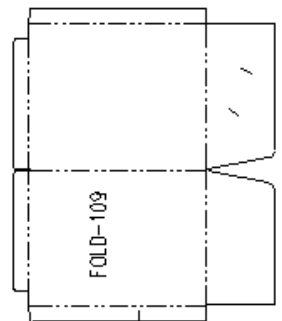
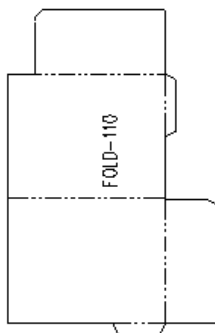
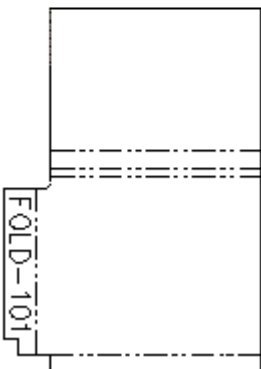
Finished: 12.05 x 10



Finished: 12 x 9.5



Finished: 11.66 x 9.88



Some layouts may require additional options